

【Name of project】(Adopted year: FY2016, (Type A-② CAMPUS Asia))

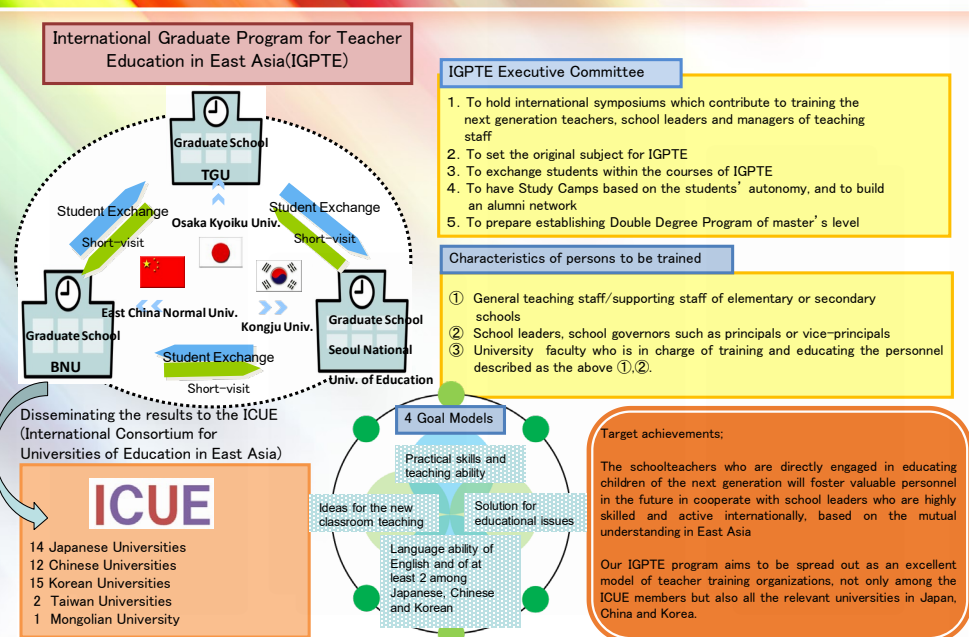
International Graduate Program for Teacher Education in East Asia (IGPTE)

### 【Summary of Project】

International Graduate Program for Teacher Education in East Asia (IGPTE) aims to conduct the CAMPUS Asia program which is leading universities of teacher education in East Asia in conjunction with Beijing Normal University (BNU), Seoul National University of Education (SNUE) and Tokyo Gakugei University (TGU). Those universities conduct unique educational programs based on the International Consortium for Universities of Education in East Asia (ICUE: 44 member universities as of May 2018) to achieve the remarkable process of internationalization and revitalize further exchange.

### The outline of International Graduate Program for Teacher Education in East Asia

ICUE



### 【Summary of Exchange program】

To reach 4 goal models, we offer both short and long term programs, a double degree program at Master's level and opportunities for research presentation and build an alumni network. Through these efforts, we provide a high quality education for students to become an international minded school teacher, a school leader or a scholar of education.

### 【Global Human Resource on the project】

The goal model of IGPTE is a person who has:

1. Leadership skills in teaching with high cultural refinement education
2. Flexibility to various and complex issues in education in East Asia
3. Skills for "lesson study" which are as high as internationally recognized level in especially those 3 countries
4. Language skills of English and other East Asian 2 languages to become global.

### 【Feature on the project】

As a university of teacher education, we have to face national character and globalization at the same time.

### 【Exchange number】

<TypeA-②>

	2016	2017	2018	2019	2020
Accepted number in Japan	C3 K3	C8 K8	C9 K9	C9 K9	C9 K9
Accepted number in China	J3 K0	J8 K0	J9 K6	J14 K6	J14 K6
Accepted number in Korea	J3 C0	J8 C0	J9 C6	J14 C6	J14 C6

# 1. FY2016 Progress

【Tokyo Gakugei University】

【Name of project】 Adopted year: FY2016, (TypeA-② CAMPUS Asia)  
International Graduate Program for Teacher Education in East Asia (IGPTE)

## ■ Exchange Programs

### Student-Mobility

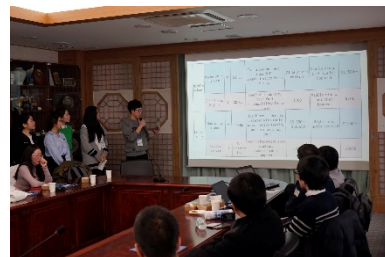
#### ○ Outbound

From 2017.2.5 to 2.18, SNUE accepted 17 postgraduate students (15 from BNU and 2 from TGU) as the Winter Program for Trilateral Cooperation (WPTC) a part of Campus Asia program. After the 2 weeks stay in Korea, the debriefing session were held at BNU.

TGU sent 3 students to BNU for 1 year as exchange students.



〈WPTC in SNUE〉



#### ○ Inbound

TGU accepted 9 Chinese ICUE member universities (3 were from BNU) and 2 from Korea. Provided 1 subject designed for International students. In spring, we offered a camp for students in Nikko.

## ■ Forming the University Network with Quality Assurance

We often conduct the meeting with BNU and SNUE regarding the translation of academic handbook at graduate schools in each country, organization systems, curriculums, credit transfers, and a double degree program.

Also, we carried out the precedence research domestic and foreign for case study.

TGU permitted for International Exchange students to take classes for undergraduate students and graduate students who met the requirement of Japanese eligibility. The quality of these classes are guaranteed by continuous improvement activities of the Office of Promoting for Teachers.

We value short term program and/or non credited program students using various ways of evaluations to improve the quality assurance in education.

## ■ Promotion of Student-Mobility Environment

To prepare for the program, we'll hire a full time lecturer as a coordinator who deals with inbound/outbound educational program starting the fiscal year 2017.

To deal with our globally cooperated educational program, we set up the CAMPUS Asia Committee to advance our strategic plan for connecting between educational program in both undergraduate and postgraduate levels and international related activities.

## ■ Internationalization of the university

### Information disclosure and Publication of outcome

We plan to foster internationalization within our campus through CAMPUS Asia program. In order to implement, we will place our coordinator in April 2017 to teach students with a finely tuned response.

In addition we soon start providing a language laboratory so called Gengo Labo for students studying abroad and improving the language skills to achieve one of our 4 goal models as indicated.

## ■ Good Practices

TGU is contributing to help achieving 4 goals for International students through CAMPUS Asia such as "Japanese Education and Culture" and "Learning educational structures and teachers' views in East Asia".

Outstanding way increasing outbound exchange students is that we provide a class of "Gakugei Frontier B" (Guidelines for studying abroad) to TGU students. It's a specially designed for undergraduate students as a regular course since FY2017 and aims to give students an opportunity to learn a significance of study abroad and making their own study abroad plan.

### <TypeA-②>

	2016
Accepted number in Japan	C9 K5
Accepted number in China	J3 K0
Accepted number in Korea	J2 C15



〈Spring Camp in Nikko〉



〈Off-campus Learning at Koishikawa Botanical Garden〉

## 2. FY2017 Progress

【Tokyo Gakugei University】

【Name of project】(Adopted year: FY2016, (TypeA-②) CAMPUS Asia)  
International Graduate Program for Teacher Education in East Asia (IGPTE)

### ■ Exchange Programs

TGU have offered various mutual exchange programs, such as short-term language and cultural programs taking advantage of the teacher training university's characteristics. TGU have achieved the more number of exchanges than planned initially.



〈Exchange Program at BNU〉



〈Summer Program at SNUE〉

### Student-Mobility

#### ○ Outbound

TGU has sent 3 exchange students (2 from Sep, 2017 and 1 from Feb, 2018) to BNU, and 3 exchange students (1 from Sep, 2017, 2 from Mar, 2018) to SNUE. Also, the short-term language and cultural program to Beijing and that to Seoul were designed both in summer and spring. 4 Japanese students participated in Beijing program in summer and 6 in spring, and 6 Japanese students participated in Seoul program in summer and 5 in spring.

One master's student gave poster presentations in International Symposium on Teacher Education in East Asia hosted by SNUE in June, 2017.

#### ○ Inbound

TGU accepted 15 students from the ICUE member universities of China (5 from BNU) and 10 students from that of Korea (5 from SNUE) in spring and fall semester. Each semester, those students took a special class designed for exchange students in order to cultivate the ideal human resources of CAMPUS Asia, and had the final presentation to conclude the one-year program. In addition, the camps the students participated voluntarily were organized in summer and spring semester. TGU hosted Summer Program for Trilateral Cooperation (SPTC) in July, 2017. 10 graduate students from China and Korea studied about Japanese education together, and had the exchange activities at school and the opportunities to experience Japanese culture.

#### <TypeA-②>

	2017
Accepted number in Japan	C24 K18
Accepted number in China	J13 K1
Accepted number in Korea	J15 C24

### ■ Forming the University Network with Quality Assurance

CAMPUS Asia Program of this project consists of short-term training, exchange program and Double Degree Program (DDP). TGU, BNU and SNUE advanced consideration for implementing DDP referring the precedents of Japan and overseas, while 3 schools repeatedly discussed about education organization, curriculum, credit recognition and exchange, and degree-granting policy. The overview of CAMPUS Asia Program and students' opinions are publicly available on the website and brochures. It shows that the quality is guaranteed properly inside the program.



〈Final presentation of incoming exchange students〉

### ■ Promotion of Student-Mobility Environment

A coordinator, a full-time staff and a part-time staff were assigned in order to implement CAMPUS Asia Program in 2017. Also, CAMPUS Asia Office and Committee was established as a schoolwide organization for connecting the curriculum of undergraduate / graduate school and international activities. It newly set up CAMPUS Asia Lounge as the communication and learning space for exchange students, as well as developing and running the program.



〈Spring Camp in Yamanashi〉

### ■ Internationalization of the university

#### Information disclosure and Publication of outcome

TGU is surely advancing globalization through CAMPUS Asia. The number of outbound students of long/short-term programs to China and Korea are increasing, and satisfaction of the inbound students is getting higher. The study achievement of out/inbound students was published as "The Collection of Training Report" so as to open and spread the information of the project. The newsletter is issued regularly by outbound students of exchange program in China and Korea, and the camp reports of inbound students also can be viewed on the website.



〈Japanese Culture Experience in SPTC〉

### ■ Good Practices

TGU is contributing to help achieving 4 goals for International students through CAMPUS Asia such as "Japanese Education and Culture" and "Learning educational structures and teachers' views in East Asia".

Outstanding way increasing outbound exchange students is that we provide a class of "Gakugei Frontier B" (Guidelines for studying abroad) to TGU students. It's a specially designed for undergraduate students as a regular course since FY2017 and aims to give students an opportunity to learn a significance of study abroad and making their own study abroad plan. Graduate students are required to take designated CA courses at 3 universities.



# 3. FY2018 Progress

【Tokyo Gakugei University】

【Name of project】 (Adopted year: FY2016, (Type A - ② CAMPUS Asia))  
International Graduate Program for Teacher Education in East Asia (IGPTE)

## ■ Exchange Programs



〈Short-term Program at BNU〉



〈Shot-term Program at SNUE〉

TGU have offered various mutual exchange programs, such as short-term language and cultural programs taking advantage of the teacher training university's characteristics. TGU have achieved the more number of exchanges than planned initially.

## Student-Mobility

### ○ Outbound

TGU has sent 5 exchange students (4 from Sep, 2018 and 1 from Feb, 2019) to BNU, 2 exchange students (1 from Sep, 2017, 2 from Mar, 2018) to SNUE and 2 students to the member universities (1 in China and 1 in Korea) of International Consortium for Universities of Education in East Asia (ICUE). Also, the short-term language and cultural program to Beijing and that to Seoul were designed both in summer and spring. 15 Japanese students participated in Beijing program in summer and 11 in spring, and 45 Japanese students participated in Seoul program in summer and 7 in Winter Program for Trilateral Cooperation (WPTC). Two graduate school students (1 doctor's student, 1 master's student) and 1 research student of master course gave poster presentations in the 13<sup>th</sup> ICUE Symposium hosted by TGU in November 2018.

### ○ Inbound

TGU accepted 22 students from the ICUE member universities of China (7 from BNU) and 15 students from that of Korea (7 from SNUE) in spring and fall semester. Each semester, those students took a special class designed for exchange students in order to cultivate the ideal human resources of CAMPUS Asia, and had the final presentation to conclude the one-year program. In addition, the students voluntarily organized camps and they visited Ito in summer and Kawaguchiko in spring. Also, TGU hosted Summer Program for Trilateral Cooperation (SPTC) in July, 2018. 10 graduate students from China and Korea studied about Japanese education together, and had the exchange activities at schools and the opportunities to experience Japanese culture.

<TypeA-②>

	2018
Accepted number in Japan	C 29 K 21
Accepted number in China	J 32 K 2
Accepted number in Korea	J 55 C 24

## ■ Forming the University Network with Quality Assurance

We have weekly meetings to discuss the degree programs, certificate programs, and other programs of CAMPUS Asia Program. During the meetings, we use *Guidelines for the Quality Assurance of International Collaborative Programs* published by the National Institution for Academic Degree and Quality Enhancement of Higher Education as a reference, to assure and improve the quality of our programs.

## ■ Promotion of Student-Mobility Environment

From October 2018, a full-time coordinator and an exchange-lecturer from BNU were assigned in order to support inbound and outbound exchange students of CAMPUS Asia Program. Also, CAMPUS Asia Office and Committee has made differences on exchange programs and proceeded with the preparations for implementing Double Degree Program (DDP). We have continued to organize the Language Laboratory for Japanese students to improve their language skills.

## ■ Internationalization of the university

### Information disclosure and Publication of outcome

TGU faculty and staff are sharing one understanding that TGU has been internationalizing rapidly in current years as the numbers show. In the fiscal year 2018, TGU has created a new webpage on the university's official website to explain all short-term study abroad programs provided by TGU, including not only CAMPUS Asia Program but also other programs held in America, Europe, and Southeast Asia. We believe that CAMPUS Asia Program plays an important role to accelerate internationalization on campus and expand students' perspectives.

## ■ Good Practices

TGU reported about the compulsory subjects which CAMPUS Asia Program offers for inbound and outbound exchange students of the program. There are two good practices we made in the fiscal year 2018. One is our official website of CAMPUS Asia Program. Although it is available only in Japanese for now, we post information about our activities and weekly reports written by TGU students who are studying in Beijing and Seoul. Also, Double Degree Program (DDP) has started, which we carefully designed. We hope it will be a good model for teacher training universities and departments in Japan.



〈Final presentation of inbound exchange students〉



〈Spring Camp for Inbound Exchange Students〉



〈Christmas Exchange Party for Inbound Exchange Students〉

# 1. FY2019 Progress

【Tokyo Gakugei University】

【Name of project】(Adopted year: FY2016, (Type A - ② CAMPUS Asia))

International Graduate Program for Teacher Education in East Asia (IGPTE)

## ■ Exchange Programs



〈Short-term Program at BNU〉



〈Short-term Program at SNUE〉

TGU has offered various mutual exchange programs, such as short-term language and cultural programs taking advantage of the teacher training university's characteristics. TGU has achieved the more number of exchanges than planned initially even under the COVID-19.

## Student-Mobility

### ○ Outbound

TGU has sent 2 exchange students to BNU, 1 exchange students to SNUE from September 2019, and 2 students to the member universities (1 in China and 1 in Korea) of International Consortium for Universities of Education in East Asia (ICUE). Also, the short-term language and cultural program to Beijing and that to Seoul were held both in summer and winter. 21 Japanese students participated in Beijing program in summer and 15 Japanese students participated in Seoul program in summer and 13 (1 without financial aid) in Winter Program for Trilateral Cooperation (WPTC). 4 graduate school students (1 Japanese and 3 Chinese) gave research presentations at breakout sessions of the 14<sup>th</sup> ICUE Symposium hosted by Shaanxi Normal University in China in October 2019.

### ○ Inbound

TGU accepted 22 students from the ICUE member universities of China (8 from BNU) and 12 students from that of Korea (4 from SNUE) in spring and fall semester. Each semester, TGU offered two special classes designed for exchange students in order to cultivate the ideal human resources of CAMPUS Asia. The exchange students had the final presentations to conclude the one-year. Also, TGU hosted Summer Program for Trilateral Cooperation (SPTC) from the end of July to the beginning of August in 2019. 10 graduate students from China and Korea studied Japanese education together and had the exchange activities at schools and the opportunities to experience Japanese culture.

## ■ Forming the University Network with Quality Assurance

We have weekly meetings to discuss the degree programs, certificate programs, and other programs of CAMPUS Asia Program. During the meetings, we use *Guidelines for the Quality Assurance of International Collaborative Programs* published by the National Institution for Academic Degree and Quality Enhancement of Higher Education as a reference, to assure and improve the quality of our programs.

## ■ Promotion of Student-Mobility Environment

Since the last academic year, a full-time coordinator and an exchange-lecturer from BNU have been assigned in order to support inbound and outbound exchange students of CAMPUS Asia Program. Also, CAMPUS Asia Office and Committee has developed exchange programs and Double Degree Program (DDP). We have continued to organize the Language Laboratory for Japanese students to improve their language skills.

## ■ Internationalization of the university,

### Information disclosure and Publication of outcome

TGU faculty and staff are sharing one understanding that TGU has been internationalizing rapidly in current years as the numbers show. Now, TGU has more classes that are focusing on international exchanges after CAMPUS Asia Program started Gakugei Frontier B: Introduction to Study Abroad. Providing more classes relating to international exchanges would encourage students to broaden their horizons, and it will activate future international exchanges and play important roles in the reformation of the curriculum at TGU. Also, more faculty members who are not taking part in CAMPUS Asia Program pay more attentions to international exchanges because of DDP, and it could be one of outcomes in the fiscal year 2019.

## ■ Good Practices

TGU has continued developing the compulsory subjects which CAMPUS Asia Program offers for inbound and outbound exchange students of the program, the contents of the official website of CAMPUS Asia Program, and DDP. There are two good practices we made in the fiscal year 2019. First, we have accepted two master course students from BNU as DDP students. Second, the exchange-lecturer gave a research presentation and many Japanese students could know a research practice conducted by the foreign researcher even students are in Japan. We hope these practices will be good models to develop international exchanges at other teacher training universities and departments of education.

<TypeA-②>

	2019
Accepted number in Japan	C 27 K 17
Accepted number in China	J 29 K 5
Accepted number in Korea	J 30 C 25



〈 Final presentation of inbound exchange students 〉



〈 Final presentation of outbound exchange students 〉



〈Summer Program for Trilateral Cooperation (SPTC) 〉



〈Christmas Exchange Party for Inbound Exchange Students〉



**【Name of project】 (Adopted year: FY2016, (Type A-② CAMPUS Asia))**  
**International Graduate Program for Teacher Education in East Asia (IGPTE)**

■ Exchange Programs

Due to the COVID-19 pandemic, the exchange programs were not carried out as originally scheduled. At the same time, however, Tokyo Gakugei University (hereafter as TGU) has successfully conducted new online-driven projects, such as virtual lectures and a language exchange program which have not been intended at first.

**Student-Mobility**

○ Outbound

By the impact of COVID-19, TGU has not been able to proceed with outbound student mobility physically. In terms of exchange programs for studying abroad, all students except one finished their programs by the end of the autumn semester of 2019, while their programs would have continued in the spring semester of 2020. Moreover, no more students were able to depart for their destinations. From February of 2021, one undergraduate student has registered for online courses offered by Beijing Normal University (BNU). In the Double-Degree Program (DDP), one student entered into BNU, two into Seoul National University of Education (SNUE) as of September 2020. The one at BNU has already started studying and researching remotely. One at SNUE traveled to Korea and started the studying-abroad program in March 2021. Furthermore, with regard to short-term programs, 9 TGU students participated in the *Winter Program for Trilateral Cooperation (WPTC)*, held online by SNUE. In addition, 11 students took part in tandem language exchange program, matching TGU and SNUE students, from October to December 2020.

○ Inbound

TGU was not able to physically welcome incoming students because of the global pandemic. In terms of exchange programs for studying abroad, only students who were accepted from the autumn semester of 2019 continued the program online, since the acceptance of students has stopped for the spring semester of 2020. TGU has accepted newly incoming students only remotely for the autumn semester. To train the ideal human resources proposed by CAMPUS Asia (CA) Project, TGU held a course where six students (two of them from BNU) from the ICUE member universities in China registered through this semester. The two BNU students have been continuing their program at TGU, aiming at the final presentations of inbound exchange students as the goal of their one year study abroad program. Besides, taking the chaotic situation of the ongoing pandemic into consideration, one student, originally scheduled to enter into TGU from BNU in October of 2020, canceled the participation in DDP.

■ Forming the University Network with Quality Assurance

TGU has weekly meetings to discuss the degree programs, certificate programs, and other types of programs situated in CA Project. Employing some references such as *Guidelines for the Quality Assurance of International Collaborative Programs*, published by the National Institution for Academic Degrees and Quality Enhancement of Higher Education, TGU has been trying to assure and further improve the quality of our programs.

■ Constructing Student-Mobility Environment

Same as the last academic year, a specially-appointed coordinator has been assigned for CA Project. While it is still hard to return to normal student mobility under the current situation of the COVID-19, the CA office and committee have been proceeding with various types of environment construction related to inbound/outbound mobility and management of DDP as planned. Moreover, *Language Laboratory* has continued to be organized to improve the language proficiency of Japanese students.

■ Internationalization of the University, Information Disclosure, and Publication of Outcomes

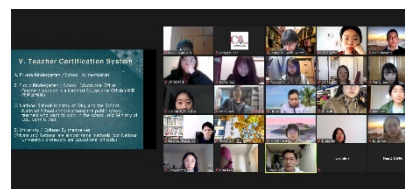
TGU faculty and staff started to share a common understanding of the remarkably internationalizing situation of TGU as the data show the achievements of internationalization. The number of courses connected with studying abroad and intercultural exchange has been increasing recently, along with *Gakugei Frontiers*, which were developed as courses unique to TGU, and *Introduction to Study Abroad*, which started as part of CA. Thus, these series of newly established courses play a prominent role in both the activation of international exchange and the present reformation of the curriculum at TGU. Moreover, it is worth noting that, based on DDP, more students are getting to know the project.

■ Good Practices

The good practices of the fiscal year 2020 can be divided into three main points as follows. Firstly, one postgraduate student has been accepted by BNU, two by SNUE as Double-Degree students, though two of the three students haven't been able to leave overseas yet due to the pandemic. Secondly, some CA-related courses have been newly established online, which enabled international students, such as those who are based on BNU, to participate in them. Finally, by holding a virtual lecture and an online symposium, many Japanese students enjoyed rich opportunities to glimpse transnational research practices even though they lived in Japan. All those trials are also expected to become milestones in future planning for universities emphasizing educational studies and teacher training.

<TypeA-②>

	2020
Accepted number in Japan	C 6 K 0
Accepted number in China	J 2 K 1
Accepted number in Korea	J 10 C 15



< 2021 WPTC >



< Final online presentation of inbound exchange students in CA 2019 >