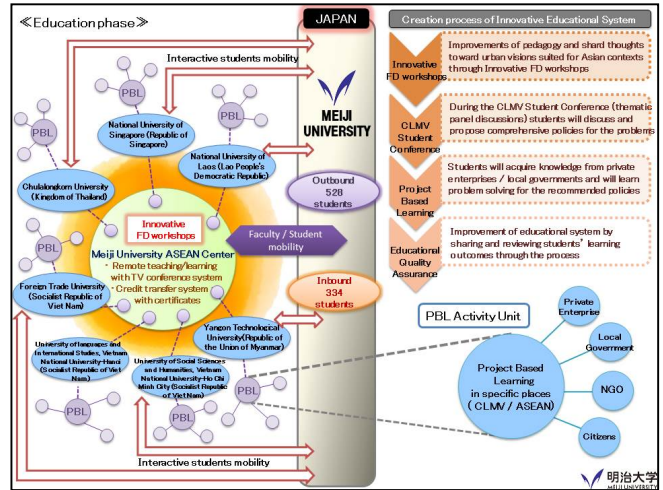
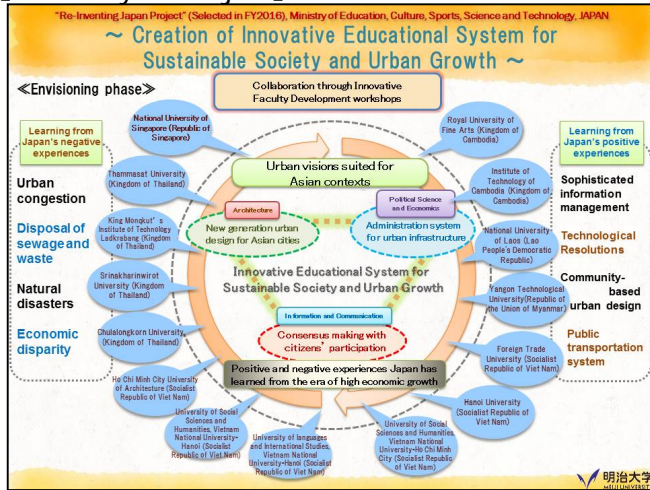


FY2016 Inter-University Exchange Project Meiji University

Support for the Formation of Collaborative Programs with Universities in Asia

【Name of project】 Creation of Innovative Educational System for Sustainable Society and Urban Growth (Adopted year: FY2016, (Type B ASEAN))

【Summary of Project】



【Summary of Exchange Program】

The School of Political Science and Economics, the School of Information and Communication, the School of Science and Technology and the Graduate School of Science and Technology have been extensively pursuing the internationalization of their educational system over the years. By joining their respective achievements and experiences in the past, the four schools will jointly embark on creating an "Innovative Educational System" for "Sustainable Society and Urban Growth," which tries to avoid negative impacts brought by western style urbanization on society. The following efforts will be made in order to achieve the above objective:

1. Organizing the "Innovative Faculty Development Workshop" and the "Student Conference" for partner institutions in CMLV countries at Meiji University ASEAN Center in Bangkok.
2. Project Based Learning for CMLV students in collaboration with the private sector and International Organization.
3. Issuing the FD Certificate for successful participants in the "Innovative Faculty Development Workshop."

【Vision of Human Resources Nurtured in the Project】

Through the close collaboration between Japanese and CMLV students, we aim at developing the following "global mindsets and competencies" among the students in order to produce the human resources who can find the most suitable urban development model for each society.

1. Ability to understand their own problems from the viewpoints of other societies while being acutely aware of the unique conditions of their own societies.
2. Ability to approach common issues and problems regardless of the difference in the stage of economic and technological development.
3. Ability to create a common sense of values and to reach a workable consensus beyond the languages and cultures of each society.

【Features of the Project】

The project consists of two phases: one that is called the "Envisioning Phase," whose major objective is to develop urban development visions suitable in Asian contexts through "Innovative Faculty Development Workshop" and the "CMLV Student Conference," and the other phase is called the "Education Phase," whose major objective is to get the students involved in the Project Based Learning based on the visions created in the "Envisioning Phase." Through these phases, several student exchange programs are conducted in this project with aiming to realize a number of student exchanges as follows.

【Exchange number】

<TypeB>

	2016	2017	2018	2019	2020
Outbound	35	121	122	124	126
Inbound	6	80	80	84	84

1. FY2016 Progress

【MeijiUniversity】

【Name of project】(Adopted year: Creation of Innovative Educational System for Sustainable Society and Urban Growth (Adopted year: FY2016, (TypeB ASEAN))

■ Exchange Programs



Model United Nations general assembly in Indochina Economic Corridor Excursion Program

Since the adoption of our proposal in 2016, we have been closely consulting with partner institutions about the implementation of student exchange program, and have cleared the target numbers both in inbound and outbound students.

On top of that, the School of Information and Communication recently developed what they called the “Gran Tour for Indochina Economic Corridor” (visiting Thailand, Vietnam, Cambodia to interact with college students in respective country), and implemented the program . 14 Meiji students actually participated in the program.

Student-Mobility

○ Outbound

Besides the program mentioned above, the four schools have been exchanging students with partner institutions. The School of Political Science and Economics sent its 14 students to Vietnam National University, Hanoi and Ho Chi Minh City for 3 weeks in February 2017. The Graduate School of Architecture (Professional Course) sent 9 students to the Meiji University ASEAN Center to get them to participate in a joint workshop with 7 students from Chularongkorn University in January, 2017. The school also dispatched 4 students to National University of Laos for a joint workshop in March, 2017.

○ Inbound

Since the implementation of the program officially started in fall semester, we did not see a large mobility of inbound students in 2016. We expect to witness a large number of students coming to Meiji from the partner institutions in 2017 academic year. However, the School of Science and Technology and the Graduate School of Science and Technology accepted 4 students from Chularongkorn University and 2 students from National Singapore University in 2016.

<TypeB>

	2016	
	Plan	Results
Outbound	35	37
Inbound	6	6

■ Forming the University Network with Quality Assurance

We have been continuously engaged in the discussion of the detail of the student exchange program and the issues concerning the Quality Assurance of it with our partner institutions. The Department of Architecture and its Graduate School has implemented a trial version of the “Innovative Faculty Development Workshop” with some of our partner institutions, which has, in fact, contributed to deepening mutual understanding of the workshop.



Trial of the Innovative Faculty Development Workshop at the Meiji University ASEAN Center

■ Promotion of Student-Mobility Environment

The continuous discussion and close consultation with the partner institutions are expected to pave the way for smooth exchange of students. We are now preparing for Project Based Learning environments for Japanese and visiting students from the partner institutions. For that purpose, we have started negotiating a new program with architect offices and Tateyama-machi in Toyama prefecture. Furthermore, a new dormitory that accommodates more than 200 students is to be completed and ready for use by the end of 2018 academic year. This dormitory is also expected to become the space both for Japanese and foreign students to interact each other in their daily lives.

■ Internationalization of the university

Information disclosure and Publication of outcome

We have set up the “Committee for Creation of Innovative Educational System for Sustainable Society and Urban Growth” in order to assure the effective collaboration among the four different schools concerned, and to confirm the progress of the project. We have also set up the web site and publish leaflets (both in Japanese and English) to disseminate the information about the project. The information about the activities planned for 2017 academic year is available on the web site.

■ Good Practices

Here's some examples of good practice:

1. Students of the School of Information and Communication held a Model United Nations general assembly with students from Srinakharinwirot University debating the reduction of poverty, and submitted the communique to the UN.(<http://academicimpact.jp/meiji/topics/2017/02/28173445/>)
2. Students of the School of Information and Communication introduced to apply their inbound program for an international tourism promotion project in Tateyama, Toyama prefecture, and their proposal won a first prize and will be implemented practically. (<http://www.meiji.ac.jp/infocom/information/2016/6t5h7p00000mdnzv.html>)

2. FY2017 Progress

【Meiji University】

【Name of project】(Creation of Innovative Educational System for Sustainable Society and Urban Growth (Adopted year: FY2016, (TypeB ASEAN))

■ Exchange Programs



With participants to FD Workshop/CLMV Student Conference at the Meiji University ASEAN Center

■ Student Mobility

○ Outbound

Each of our four schools have successfully dispatched outbound students in FY2017. The School of Political Science and Economics sent its 47 students through short-term and long-term student exchange programs to Vietnam and Thai partner universities. The School/Graduate School of Science and Technology sent 43 students to Chularongkorn University and other universities and made cultural exchanges with 20 over students from six universities in Cambodia, Laos, Vietnam, etc. Lastly, the School of Information and Communication sent 43 students towards University of Languages and International Studies - Vietnam National University, Hanoi (ULIS), Srinakharinwirot University in Thailand , etc.

○ Inbound

The School of Political Science and Economics accepted 21 students from several Thai universities. Acceptance to the School/Graduate School of Science and Technology was 20 students from Chularongkorn University and the National University of Singapore. The School of Information and Communication accepted 32 inbound students from ULIS, Srinakharinwirot University and other universities.

■ Forming Inter-University Networks with Quality Assurance

We have been continuously engaged in the discussion of the detail of the student exchange program and the issues concerning the Quality Assurance of it with our partner institutions. The Graduate School of Science and Technology has implemented a trial version of the “Innovative Faculty Development Workshop” with six of our partner institutions during its summer program “ASEAN Dual-city joint workshop program”.

■ Development of Student Mobility Environment

The continuous discussion and close consultation with the partner institutions are expected to pave the way for smooth exchange of students. Furthermore, a new dormitory that accommodates more than 200 students is to be completed and ready for use by the end of 2018 academic year. This dormitory is expected to become a space both for Japanese and foreign students to interact each other in their daily lives. On the other hand, having a contract between Meiji University and an insurance company, our outbound students have been privileged to have a “Total Support Services”, with 24 hours telephone support, during their overseas studies.

■ Internationalization through This Project, Information Disclosure and Publication of Outcome

We have set up the “Committee for Creation of Innovative Educational System for Sustainable Society and Urban Growth” in order to assure the effective collaboration among our four schools, and to share the progress of each project. We have set up a website and publish leaflets (both in Japanese and English) to disseminate information about our project. Moreover, a reporting session “Fly to the World” were held as one of main events of “Meiji University Academic Festival” in November 2017 in order to publicize student mobility programs of the four schools as well as the CLMV student conference.

■ Good Practices

Here we shows two good practices as below;

1. The four schools held a joint reporting session and reviewed their programs for the purpose of ensuring quality in Academic Festival, Nov.2017.
2. Tateyama town in Toyama prefecture implemented an experiment of an international tourism promotion project, which proposal was made by the School of Information and Communication and got the first prize in 2016. Short-term visiting students from Vietnam joined the experiment and introduced by mass media.

(<http://www.meiji.ac.jp/infocom/information/2017/6t5h7p00000oii3c.html>)

In the FY2017, we have launched FD Workshop/CLMV Student Conference at the Meiji University ASEAN Center in Bangkok, with the aim of sharing problems caused by urbanizations in each country and giving suggestions for resolving them. Teaching staffs and Students were invited from selected 8 partner universities in ASEAN countries. In addition, a fieldwork to an international organization as a trial program of “PBL-type experience learning”, and active discussions among teaching staffs and students from Japan and ASEAN countries fostered a common recognition towards “Asian-type Grand Urban Plan”. On top of them, our inbound/outbound student exchange programs have successfully been done as we have planned, with close mutual relationships with partner institutions.

<TypeB>

	2017	
	Plan	Results
Outbound	121	133
Inbound	80	73



Reporting session of the student exchange programs held in Surugadai Campus, Meiji University

3. FY2018 Progress

【Name of project】(Creation of Innovative Educational System for Sustainable Society and Urban Growth (Adopted year: FY2016, (Type B ASEAN))

■ Exchange Programs



(CLMV Student Conference, Bangkok)

In FY2018, our FD Workshop/CLMV Student Conference at the Meiji University ASEAN Center in Bangkok was successfully held with the aim of sharing problems caused by urbanization in each country and giving suggestions to resolve them as was done in FY2017. Teaching staff and students were invited from nine selected partner universities in ASEAN countries. In addition, PBL-type experience learning, fieldwork to international organizations, as well as active discussions among teaching staff and students from Japan and ASEAN countries fostered a common recognition towards “an Asian-type Grand Urban Plan”. Moreover, our inbound and outbound student exchange programs were successfully held as planned, helping further close mutual relationships with partner institutions.

Student-Mobility

○ Outbound

Each of our four schools successfully dispatched outbound students in FY2018. The School of Political Science and Economics sent 40 students through short-term and long-term student exchange programs to partner universities in Vietnam and Thailand. The School and Graduate School of Science and Technology sent 46 students to Chulalongkorn University and other universities, and 13 students among them engaged in workshops with 15 students from six universities in Cambodia, Laos, Vietnam, and Myanmar. Lastly, the School of Information and Communication sent 29 students through short-term and long-term student exchange programs to Vietnam, Cambodia, and Thailand.

○ Inbound

The School of Political Science and Economics accepted 32 students from universities in Thailand and Vietnam, while the School and Graduate School of Science and Technology admitted 34 students from universities in CLMV countries, Thailand, and Singapore. The School of Information and Communication accepted 23 inbound students from universities in Laos, Vietnam and Thailand.

<TypeB>

	2018	
	Plan	Results
Outbound	122	115
Inbound	80	89

■ Forming the University Network with Quality Assurance

We have been continuously engaged in discussions about our student exchange programs and issues concerning the quality assurance with our partner institutions. The Graduate School of Science and Technology exchanged opinions regarding such issues as quality assurance and curriculum of the JABEE Accredited Program on bachelor’s and master’s degrees during several “Innovative Faculty Development Workshops” held in Bangkok.



(Project Based Learning, Tokyo)

■ Promotion of Student-Mobility Environment

Our continuous discussions and close consultations with our partner institutions have nourished an environment for the smooth exchange of students. Furthermore, a new dormitory which accommodates more than 200 students completed and started accepting students from March 2019. This dormitory is expected to become a space for both Japanese and foreign students to interact with each other in their daily lives. On the other hand, having a contract between Meiji University and an insurance company, our outbound students are privileged to have “Total Support Services”, with 24-hour telephone support, during their oversea studies

■ Internationalization of the university Information disclosure and Publication of outcome

We have established a “Committee for Creation of Innovative Educational System for Sustainable Society and Urban Growth” in order to assure effective collaboration among the four participating schools, and to share the progress of each project. We have set up a website and published leaflets (both in Japanese and English) to disseminate information about our project. Moreover, a reporting session, “Fly to the World” was held as one of the main events of the Meiji University Academic Festival in November 2018 in order to publicize student mobility programs by the four schools as well as the CLMV Student Conference.

■ Good Practices

Here we show two good practices as follows;

1. A PBL-type experience learning program studying the redevelopment of the Tokyo bay area and the Otemachi/ Marunouchi/ Yurakucho district was held in cooperation with the Urban Renaissance Agency, the Mitsubishi Estate Company and Mitsubishi Jisho Sekkei. Exchange students and Meiji University students joined and actively discussed redevelopment and urbanization issues.

(<https://www.meiji.ac.jp/cip/clmv-asean/news/2018/6t5h7p00000tcei2.html>)

2. The School of Information and Communication paved the way for a comparative study of city sightseeing among Thailand, Cambodia, and Vietnam, under the auspices of Designated Areas for Sustainable Development Administration (DASDA) and made site visits to slum areas in Bangkok, Siem Reap and Phnom Penh.

4. FY2019 Progress

【Name of project】(Adopted year: (Creation of Innovative Educational System for Sustainable Society and Urban Growth (Adopted year: FY2016, (Type B ASEAN))

Exchange Programs



(Innovative FD Workshop, Bangkok)

In FY2019, our FD Workshop/CLMV Student Conference at the Meiji University ASEAN Center in Bangkok was successfully held with the aim of sharing problems caused by urbanization in each country and giving suggestions to resolve them as was done in FY2017 and 2018. 21 teaching staff and 10 students were invited from ten selected partner universities in ASEAN countries and engaged in active debates with 10 teaching staff and 29 students from Meiji University. In addition, PBL-type experience learning, fieldwork to international organizations, as well as active discussions among teaching staff and students from Japan and ASEAN countries fostered a common recognition towards “an Asian-type Grand Urban Plan”. Moreover, our inbound and outbound student exchange programs were successfully held as planned, helping further close mutual relationships with partner institutions.

Student-Mobility

Outbound

Each of our four schools successfully dispatched outbound students in FY2019. The School of Political Science and Economics sent 27 students through short-term and long-term student exchange programs to partner universities in Vietnam and Thailand. The School and Graduate School of Science and Technology sent 47 students to Chularongkorn University and other universities, and 17 students among them engaged in workshops with 13 students from five universities in Cambodia, Laos, Vietnam, and Myanmar. Lastly, the School of Information and Communication sent 40 students through short-term and long-term student exchange programs to Vietnam, Cambodia, and Thailand.

Inbound

The School of Political Science and Economics accepted 42 students from universities in Thailand and Vietnam, while the School and Graduate School of Science and Technology admitted 26 students from universities in CLMV countries, Thailand, and Singapore. The School of Information and Communication accepted 31 inbound students from universities in Laos, Vietnam and Thailand.

<TypeB>

	2019	
	Plan	Results
Outbound	124	114
Inbound	84	99

Forming the University Network with Quality Assurance

We have been continuously engaged in discussions about our student exchange programs and issues concerning the quality assurance with our partner institutions. The Graduate School of Science and Technology exchanged opinions regarding such issues as quality assurance and curriculum of the JABEE Accredited Program on bachelor’s and master’s degrees during several “Innovative Faculty Development Workshops” held in Bangkok.



(Project Based Learning, Shibuya, Tokyo)

Promotion of Student-Mobility Environment

Our continuous discussions and close consultations with our partner institutions have nourished an environment for the smooth exchange of students. Furthermore, a new dormitory which accommodates more than 200 students completed and started accepting students from March 2019. This dormitory has become a space for both Japanese and foreign students to interact with each other in their daily lives. On the other hand, having a contract between Meiji University and an insurance company, our outbound students are privileged to have “Total Support Services”, with 24-hour telephone support, during their oversea studies.

Internationalization of the university Information disclosure and Publication of outcome

We have established a “Committee for Creation of Innovative Educational System for Sustainable Society and Urban Growth” in order to assure effective collaboration among the four participating schools, and to share the progress of each project. We have started distributing videos “CLMV Student Conference 2019” and “Fieldwork to Klong Toey and CODI” from our website in addition to program reports, and published leaflets (both in Japanese and English) to disseminate information about our project. Moreover, a reporting session, “Fly to the World” was held as one of the main events of the Meiji University Academic Festival in November 2019 in order to publicize student mobility programs by the four schools as well as the CLMV Student Conference.

Good Practices

Here we show two good practices as follows;

1. A PBL-type experience learning program studying the redevelopment of the Shibuya was held in cooperation with the Tokyu Corporation. Exchange students and Meiji University students joined and actively discussed redevelopment and urbanization issues.

(<https://www.meiji.ac.jp/cip/clmv-asean/news/6t5h7p00001z6yi1.html>)

2.The Meiji Global Village, an internationally mixed-residence dormitory which is adjacent to Meiji University Izumi Campus, has been opened since March 2019. The primary concept of the MGV is to function as a space of learning where international (non-Japanese) and Japanese students live together and form an international community while sharing space for learning and interchange.

5. FY2020 Progress

【Name of project】(Adopted year: (Creation of Innovative Educational System for Sustainable Society and Urban Growth (Adopted year: FY2016, (Type B ASEAN))

■ Exchange Programs



(Online-based PBL program held in January 2021)

The FD Workshop/CLMV Student Conference, which has been held at the Meiji University ASEAN Center in Bangkok every year in August since 2017 was discontinued. This was due to the spread of Covid-19 and government-ordered lockdowns on several partner institutions in FY2020. However, the PBL program dedicated to studying the JR Takanawa Gateway Area, which was originally scheduled as a face-to-face program for May 2020, was finally conducted online with participation of external collaborators from Tokyo and the US in January 2021.

Moreover, discussions are ongoing to make the inbound and outbound programs planned with partner institutions online programs and hybrid programs, combining online and face-to-face interaction.

Student-Mobility

○ Outbound

In FY2020, no face-to-face planned programs were implemented due to the impact of Covid-19. Even under such severe circumstances, however, 11 students from the School of Political Science and Economics participated in the online program run by the Vietnam partner institutions, and one student in a long-term program in Thailand. 11 students in the School and Graduate School of Science and Technology participated in the online program implemented jointly with Chulalongkorn University. Lastly, 41 students (and one student who joined for part of the time) from the School of Information and Communication joined an online joint program with Srinakharinwirot University.

○ Inbound

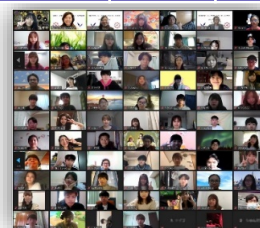
In FY 2020, 41 students participated in the PBL online learning program jointly undertaken by our four schools. 10 students from universities in Thailand participated in an online program implemented by the School and the Graduate School of Science and Technology, and 8 students from universities in Vietnam and Thailand participated in an online program implemented by the School of Information and Communication.

<Type B> *excluded one student who partly joined

	2020	
	Plan	Results
Outbound	126	64*
Inbound	84	59

■ Forming the University Network with Quality Assurance

We have been continuously engaged in discussions about our student exchange programs and issues concerning the quality assurance with our partner institutions. From Nov. 2020 to Feb. 2021, an external evaluation was conducted by three external evaluators. The results of the external evaluation will be reflected in our future activities and posted on our website.



(Online Student Exchange Program, the School of Information and Communication) close consultations with our partner

■ Promotion of Student-Mobility Environment

In this period of the Covid-19 crisis, we are continuing our discussions and close consultations with our partner institutions in order to develop online and hybrid programs and to improve the acceptance environment for students. As part of this effort, we are planning an introductory online program aimed at getting students interested in studying abroad programs through the ASEAN Center. In addition, as a support measure for inbound students, our new dormitory “Meiji Global Village” will accept more than 200 students. Our outbound students have been privileged to have “Total Support Services”, with 24-hour telephone support during their overseas studies.

■ Internationalization of the university

Information disclosure and Publication of outcome

The PR materials (in Japanese and English) for our project and the printed materials provided by each department are not only distributed to the universities where the project is being conducted but are also made available on the PR website. In addition to reporting on the implementation of each program and on-demand video distribution of CLMV conferences in FY2019, a video introducing the PBL online program in January 2021 and the results of external evaluations conducted from November 2020 to February 2021 are also available on this project's website. Efforts are also being made to distribute information on the internationalization activities of our university and disseminate the results.

■ Good Practices

We would like to offer an example of “good practice” below:

In January 2021, a PBL online program was conducted to learn about community development in areas surrounding the JR Takanawa Gateway Station. This PBL was conducted in cooperation with the East Japan Railway Company (JR East), the designer Pickard Chilton (USA), a design consortium (JR East Sekkei, JR East Consultants, Nippon Sekkei, Nikken Sekkei), and Tripod Studio. A total of 67 people participated in the PBL, including 41 students from partner institutions in Cambodia, Laos, and Vietnam, 5 students from Meiji University, students outside partner institutions, students who had experiences studying abroad at Meiji University, and professors from partner institutions.

(<https://www.youtube.com/watch?v=dX11RHViRes&list=PL8bCC-xrDXMQpu1mXLgjoUcZhqMELxSDp&index=2>)